

F-15632

Km 641  
1-2-2

7" (20") 1760

Superior Realty Co. #1  
M. C. Allen #2  
Union District, Kanawha County, W. Va.  
Map Square 54-59  
Commenced - 6-30-39  
Completed - 9-13-39  
Elevation - 595 Gr.

Contractor: Charlie Jones  
Rise Engine

Surface	0	38
Slate	38	100
Sand	100	210
Slate	210	340
Sand	340	510
Slate	510	810
Gas sand	810	844
Slate	844	860
Salt sand	860	1260
Slate	1260	1275
Lime	1275	1285
Sand	1285	1447
Little lime	1447	1477
Slate	1477	1480
Big lime	1480	1680
Big Injun	1680	1720
Slate	1720	1725
Sand	1725	1750
Slate & shells	1750	2148
Berea sand	2148	2172
Lime	2172	2185
Slate & shells	2185	2247
Lime	2247	2267
Slate & shells	2267	3400
Brown shale	3400	3444
Slate & shells	3444	3660
Brown shale	3660	3690
White slate	3690	3720
Brown shale	3720	3915
White slate	3915	4535
Brown shale	4535	4593
Corniferous lime	4593	4808
Total depth		4808

Show gas 950'  
Hole full water 975'  
Show gas 2905-2915  
Show gas 3420  
Show gas 3460  
Show gas 3670  
Show gas 3848 - All gas to here tested 12/10  
W 1" (36 M)  
Gas 3870, 20/10 W 1" (47 M)

Test before shot 17/10 W 1" (43 M)  
Shot @ 2:00 P.M. 9-14-39 with 3150# gelatin  
from 3420-3898. While running shot 12' of  
casings came in hole @ 3736-3748 - Rest of  
gelatin was run without cleaning out casings  
20 qts. of glycerine poured on top of Gel.  
@ 3420'. Shot bridged @ 3250' - Lost tools  
while cleaning out @ 3653' - Also lost rope  
knife cutting cable loose from tools

Gas test @ 11:00 A.M. 9-18-39 with tools and  
casings still in hole 70/10 W 1" (88 M)

Open flow - 88 M  
15 hr. R.P. 510#

Note: Drillers did not log Oriskany -  
Only 3 sand samples saved and they  
indicated some sand.

RECEIVED

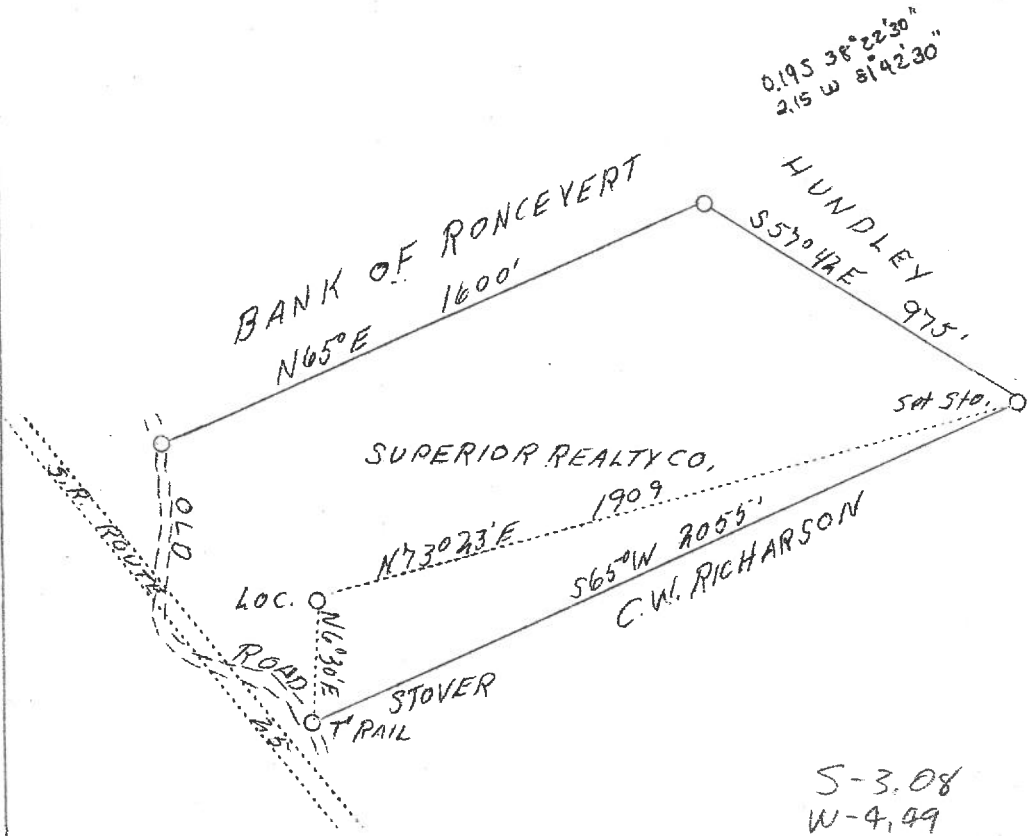
FEB 6 1975

U.S. GEOLOGICAL SURVEY  
DEPT. OF THE INTERIOR

Kan-641

LATITUDE 38° 25'

LONGITUDE 81° 40'



S-3.08  
W-4.49

New location

NO COAL OPERATED

Company	M.C. Allen
Address	Quick, W. Va.
Farm	Superior Realty Co.
Tract	25
Well (Farm) No.	1
Serial No.	2
El. (S.L.)	595
Quadrangle	<del>Wc</del>
County	Kanawha
District	Union
Eng.	C.E. Krobs
Eng. Reg. No.	9
File No.	11.620
Date	6/15/39
Scale	1" = 400'

STATE OF WEST VIRGINIA  
Department of Mines  
OIL AND GAS DIVISION  
CHARLESTON

WELL LOCATION MAP

File No. Kan-646 641

x Denotes location of well on U.S. Topographic Maps, scale 1 to 62,500, latitude and longitude lines being represented by border lines as shown.

- Denotes one inch spaces on border line of original tracing.

6-6 Dunbar

(213)

~~deep~~ deep Well