



## WEST VIRGINIA LEGISLATURE

### LEGISLATIVE OVERSIGHT COMMISSION ON HEALTH AND HUMAN RESOURCES ACCOUNTABILITY (LOCHHRA)

Monday, December 11, 2023

2:00pm – 4:00pm

Senate Judiciary, 208-W

#### Agenda\*

- I. Call to Order
- II. Roll Call
- III. Approval of Minutes
- IV. Presentations:
  - Update on the Transition of the Department of Health and Human Resources – Shared Administration
    - Dr. Sherri Young, Interim Secretary, Department of Health and Human Resources and Incoming Secretary, Department of Health
    - Dr. Cynthia Persily, Incoming Secretary, Department of Human Services
    - Michael Caruso, Incoming Secretary, Department of Health Facilities
  - Discussion on the Long-Term Sustainability Plan for the Department of Health Facilities
    - Michael Caruso, Incoming Secretary, Department of Health Facilities
  - Update on Sober Living Home Taskforce (House Bill 3306)
    - Rachel Thaxton, Interim Director, Office of Drug Control Policy
  - Update on Reimbursement Rates to IDDW Program (Senate Bill 617)
    - Cindy Beane, Commissioner, Bureau for Medical Services

\*Agenda subject to change



## **West Virginia Legislature**

### **Legislative Oversight Commission on Health and Human Resources Accountability**

**Minutes for OCTOBER 17, 2023, 9:08 AM**

Pursuant to the call of the Chair, the Legislative Oversight Commission on Health and Human Resources Accountability met on October 17, 2023, 9:08 AM in Room 451M.

Members present: Senators Maroney, Plymale, Takubo and Woodrum, and Delegates Summers, Fehrenbacher, Hite, Rohrbach, and Tully

Members absent: Senators Deeds and Grady, and Delegate Griffith

A silent roll call being taken, the presence of a quorum was established.

On motion of Delegate Summers, the minutes of the previous meeting were approved.

Senator Maroney recognized Matt Izzo, Chief Administrator, Office of Chief Medical Examiner, and administered the oath. Mr. Izzo delivered a presentation to the Commission and answered questions.

Senator Maroney recognized Matthew Wickert, Registrar for the Vital Records Branch, Department of Health and Human Resources. Mr. Wickert delivered a presentation to the Commission and answered questions.

Senator Maroney recognized Robert Kimes, Executive Director, West Virginia Funeral Directors and Crematory Operators Association, and administered the oath. Mr. Kimes delivered a presentation to the Commission.

Senator Maroney recognized Dr. Cynthia Persily, Incoming Secretary for the Department of Human Services, and administered the oath. Dr. Persily delivered a presentation to the Commission and answered questions.

Senator Maroney recognized Michael Caruso, Incoming Secretary for the Department of Health Facilities, and administered the oath. Mr. Caruso delivered a presentation to the Commission and answered questions.



## West Virginia Legislature

### Legislative Oversight Commission on Health and Human Resources Accountability (LOCHHRA)

Minutes for NOVEMBER 12, 2023, 1:00 PM

Pursuant to the call of the Chair, the Legislative Oversight Commission on Health and Human Resources Accountability met on November 12, 2023, 1:00 PM at The Health Plan.

Members present: Senators Maroney, Deeds, and Woodrum and Delegates Summers, Fehrenbacher, Rohrbach, and Tully

Members absent: Senators Grady, Plymale, and Takubo and Delegates Griffith and Hite

A silent roll call being taken, the presence of a quorum not established.

Co-Chair Summers recognized Dr. Sherri Young, Interim Secretary of the DHHR and Incoming Secretary for the Department of Health, and administered the oath. Dr. Young delivered a presentation to the Commission and answered questions.

Co-Chair Summers recognized Cynthia Persily, Incoming Secretary for the Department of Human Services, and administered the oath. Dr. Persily delivered a presentation and answered questions from the Commission.

Co-Chair Summers recognized Michael Caruso, Incoming Secretary for the Department of Health Facilities, and administered the oath. Mr. Caruso delivered a presentation to the Commission and answered questions.

On Motion of Senator Maroney the committee adjourned.

---

Delegate Amy Summers

Co-Chair

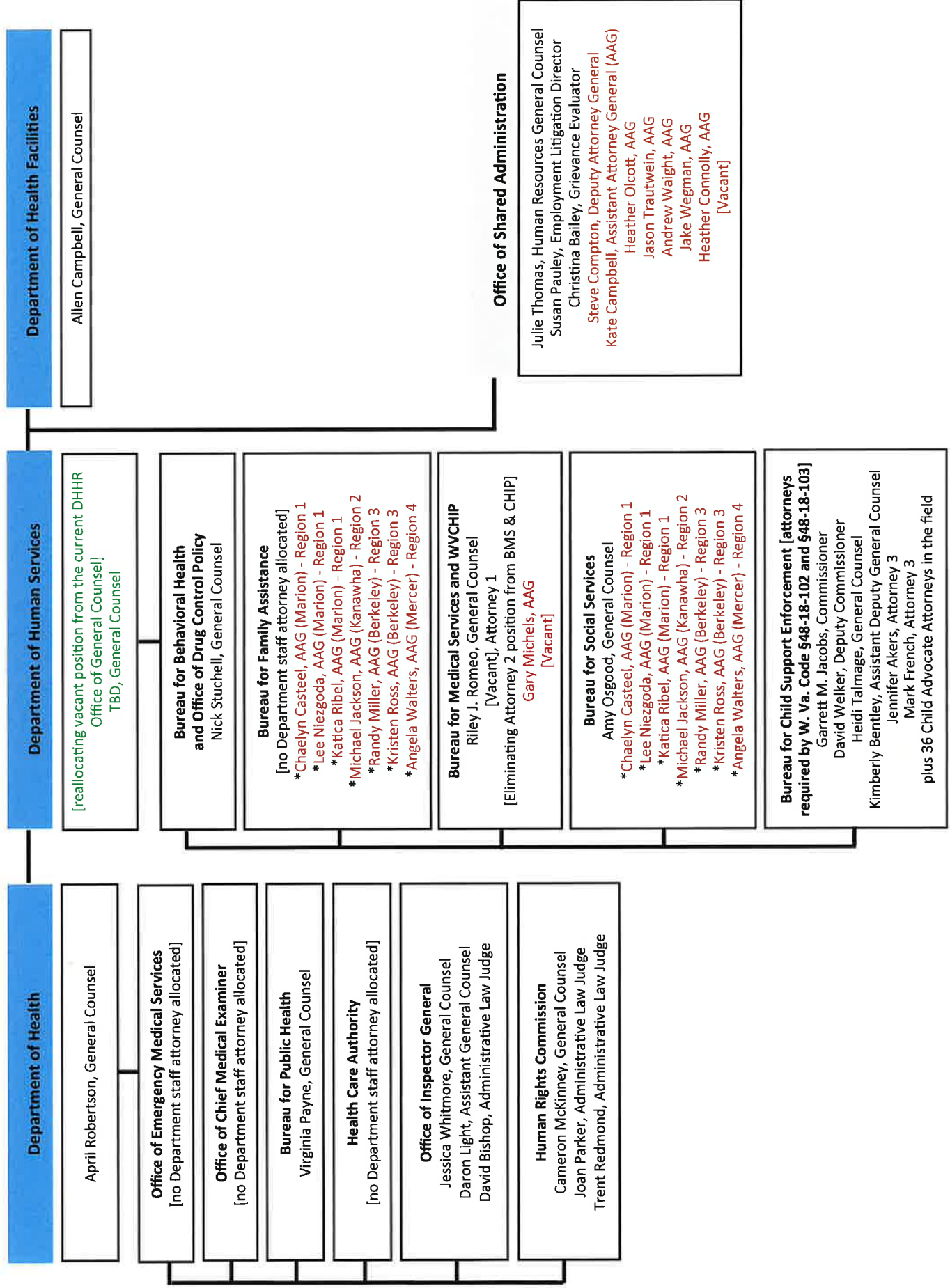
---

John T. Giovengo

Commission Clerk

**Attorney Staff—as of November 29, 2023**

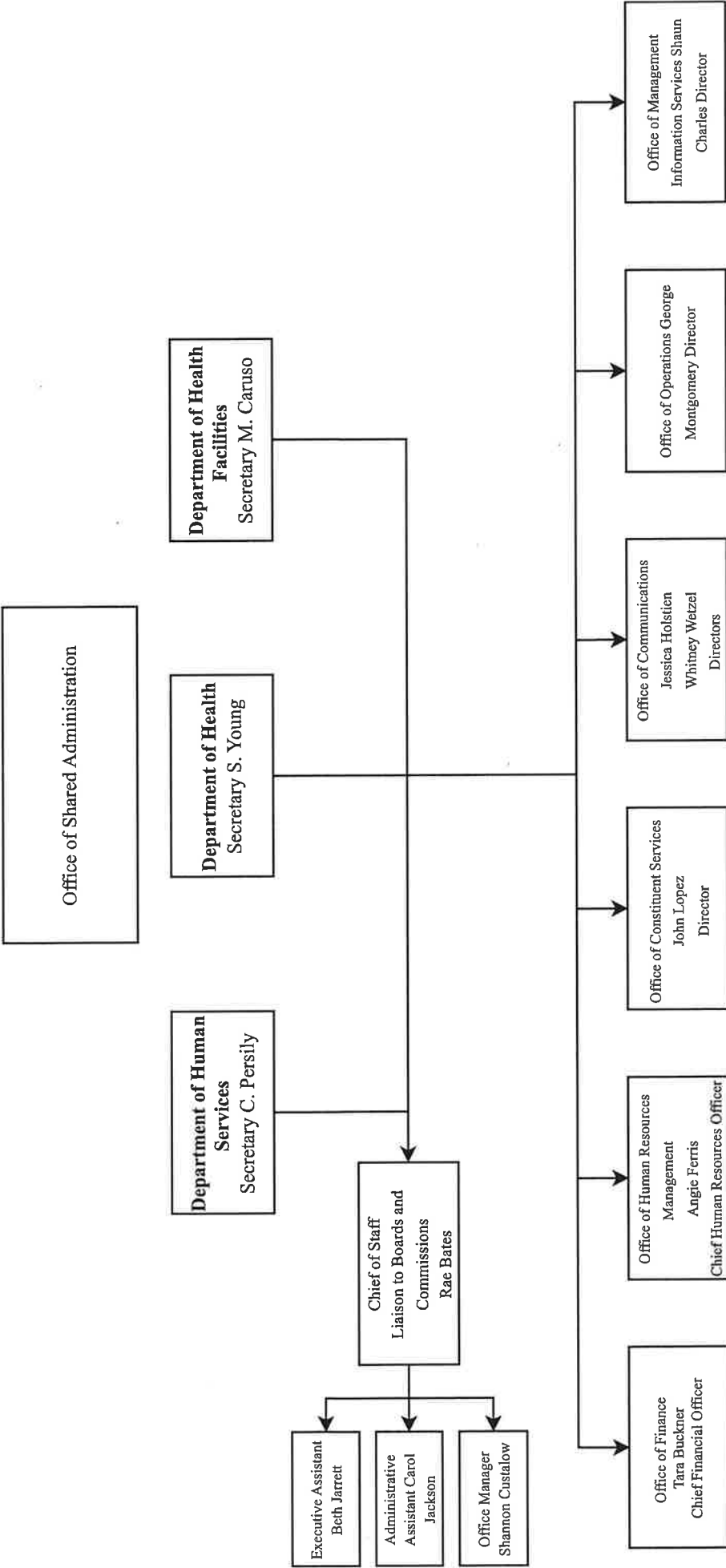
[red] indicates Attorney General's Office litigators | [green] indicates reallocated position | [\*] indicates dual assignments



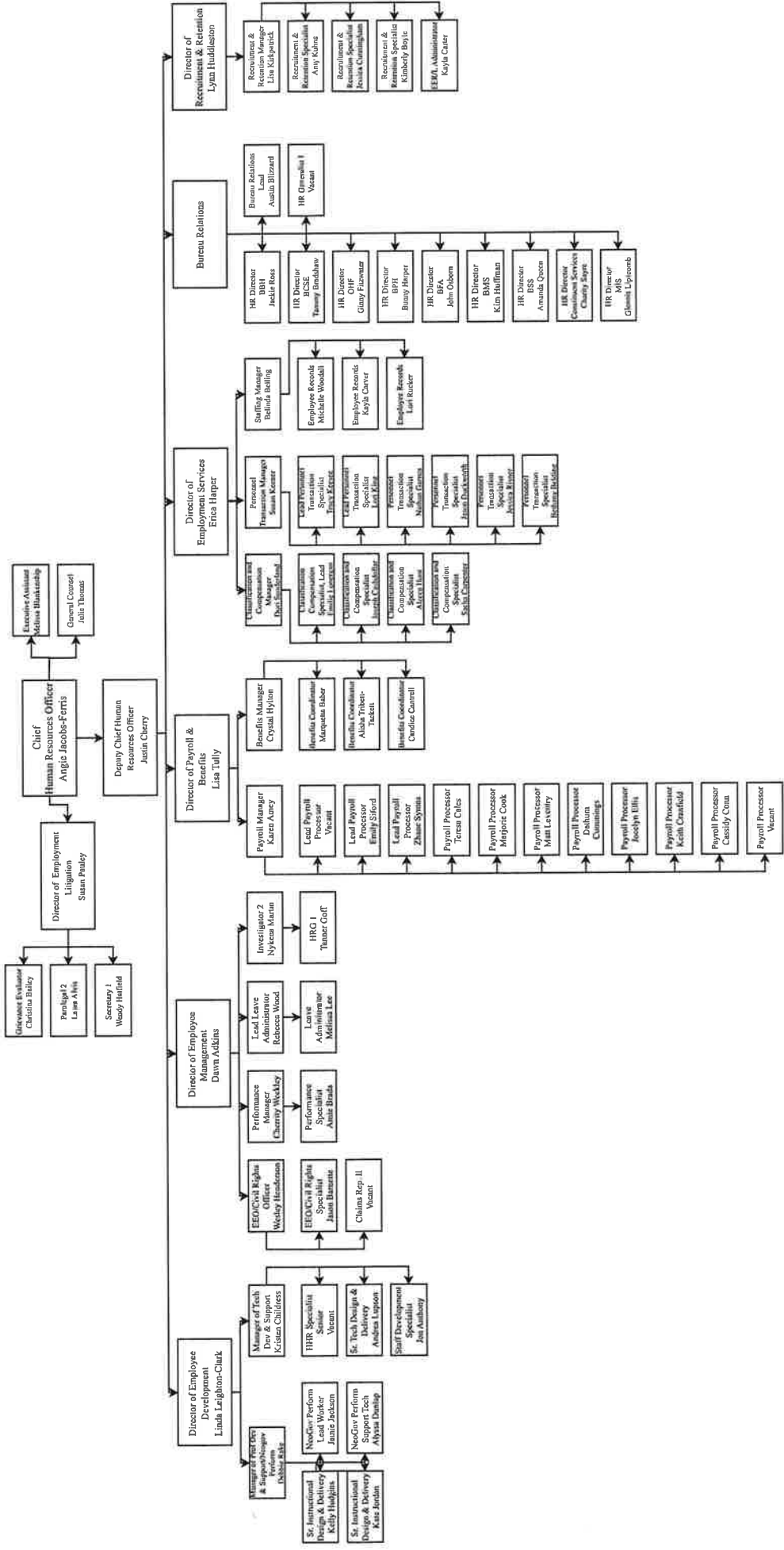
# Purchasing Approval and Process for equipment with OT review\*

Current Process Benchmarks	Milestone	Revised Process Benchmarks
22 days	DHHR Purchasing/Finance Review	18 days
14 days	OT Review	7 days
14 days	State Purchasing Division Review	3 days (if the purchase is under \$100,000 or exempt, this step is not needed)
21 days	Out for Bid (posting, FAQs, etc)	18 days
7 days	Spending Unit Bid Evaluation	7 days
14 days	OT Approval of Award	3 days
10 days	DHHR Purchasing creates award in system	3 days (if the purchase is under \$100,000 or exempt, this is the end of the process)
14 days	State Purchasing Division Award **	7 days
<b>Total 119 days</b>		<b>Total 59-69 days (depending on size of award and exempt status)</b>

\*Subject to change through continuous quality improvement  
 \*\* All contracts over 500K go to Governor's office for approval (typically takes 1 day)



Office of Shared Administration  
Office of Human Resources



Office of Shared Administration  
Office of Communications

Department of Human  
Services  
Secretary C. Persily

Director  
Department of Human  
Services  
Whitney Wetzel

Communications  
Specialist  
Angel Hightower

Department of Health  
Secretary S. Young

Director  
Departments of Health  
and Health Facilities  
Jessica Holstein

Deputy Director  
Ann Moore

Communications  
Specialist  
Chloe Cook

Department of Health  
Facilities  
Secretary M. Caruso





# LOCHHRA Updates: West Virginia Department of Health

Sherri A. Young, DO, MBA, FAAFP  
Interim DHHR Cabinet Secretary

Legislative Oversight Commission on Health and Human Resources  
Accountability (LOCHHRA)

Legislative Interims | December 12, 2023

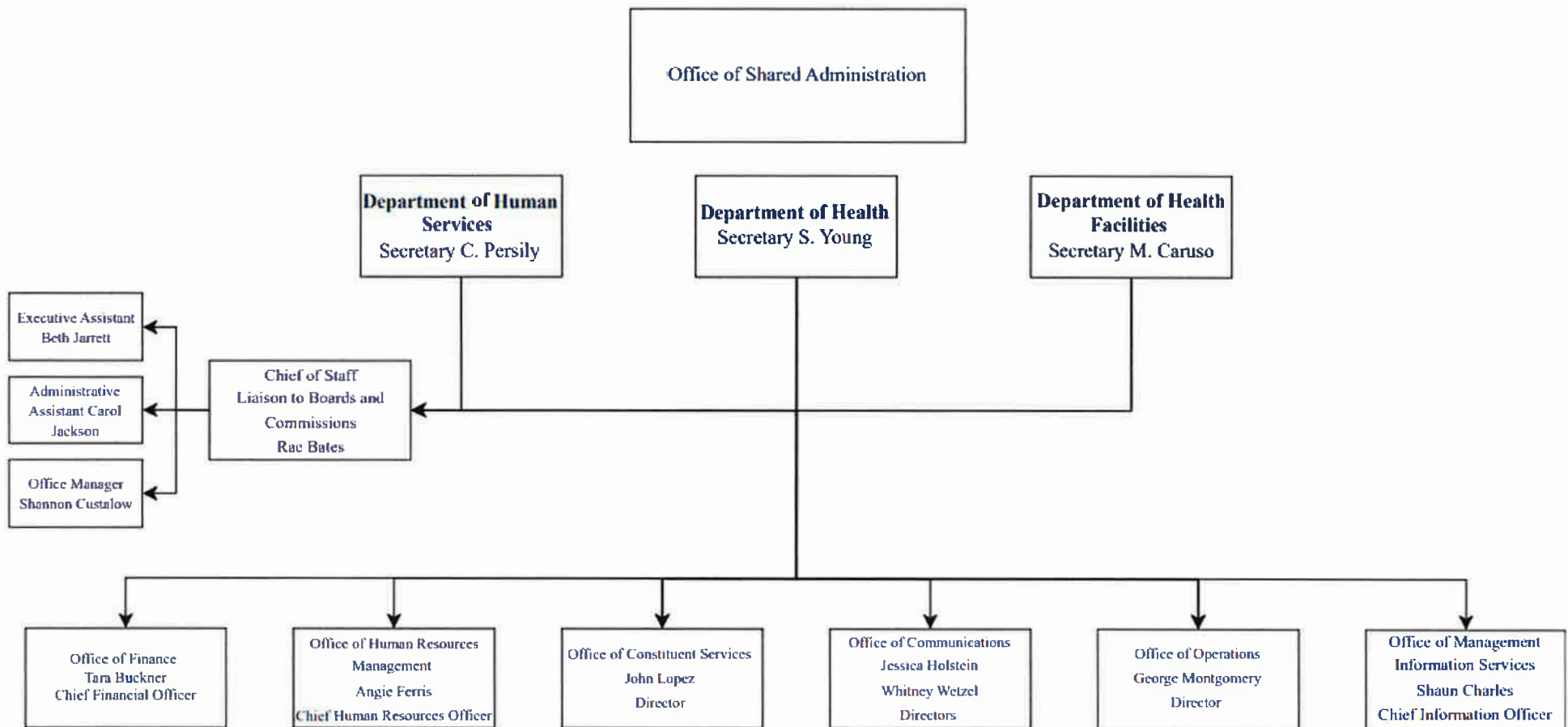


## Workforce Evaluation

- **Between November 1, 2022, and October 31, 2023, we identified 133 employees who became eligible for retirement.**
- **Of those, 26 (19.5%) left within six months of becoming eligible, including four who left with partial retirement due to disability.**

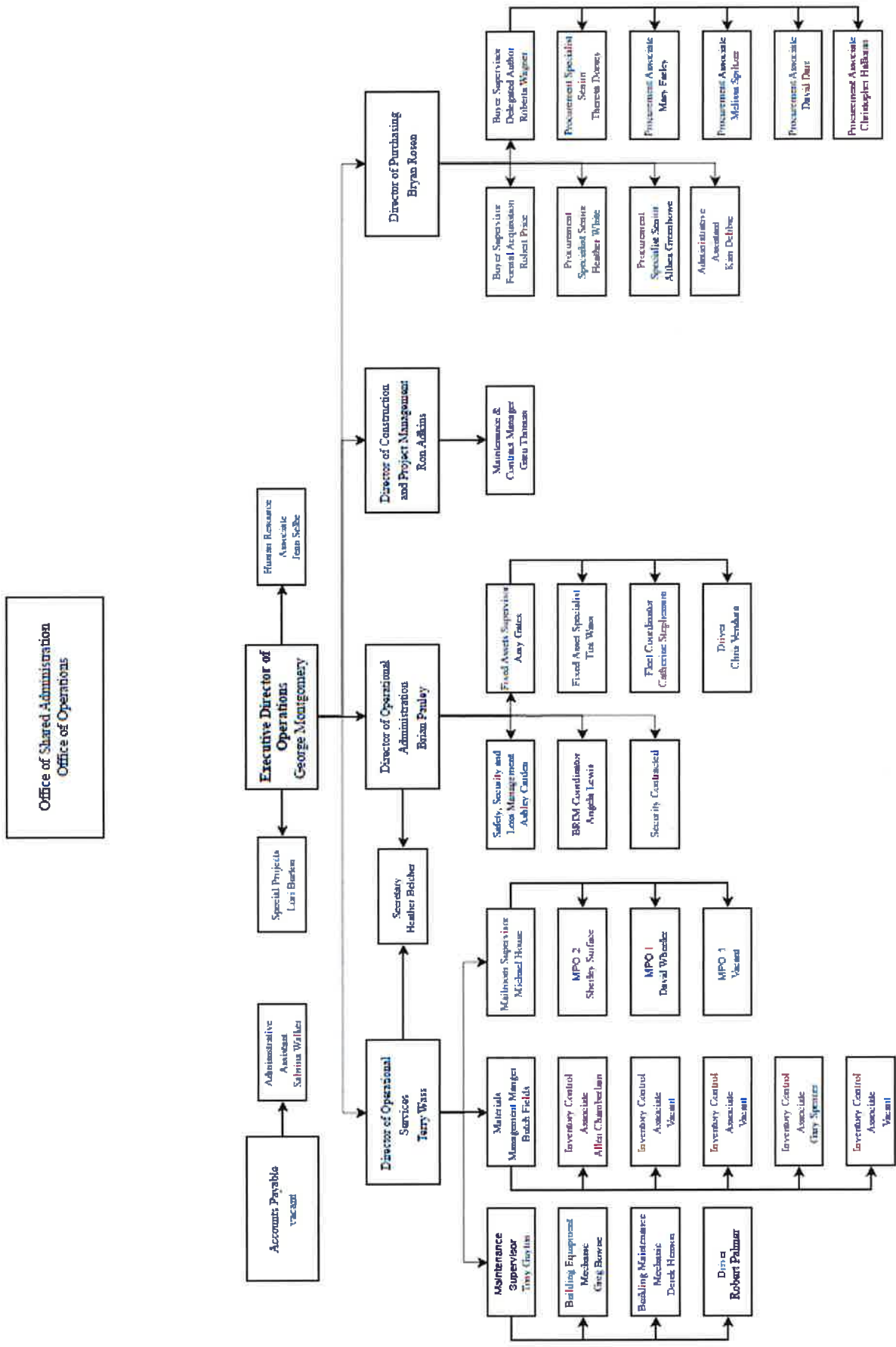
# Office of Shared Administration

## Round table discussion with Directors on December 15





# Operations





# Contact

**Sherri A. Young, DO, MBA, FAAFP**

Interim DHHR Cabinet Secretary

Incoming Cabinet Secretary of the West Virginia Department of  
Health

One Davis Square, Suite 100 East

Charleston, WV 25301

Phone 304-352-4100

Email: [Sherri.A.Young@wv.gov](mailto:Sherri.A.Young@wv.gov)



# Sustainability of State-Owned Health Facilities

Legislative Oversight Commission on Health and  
Human Resources Accountability

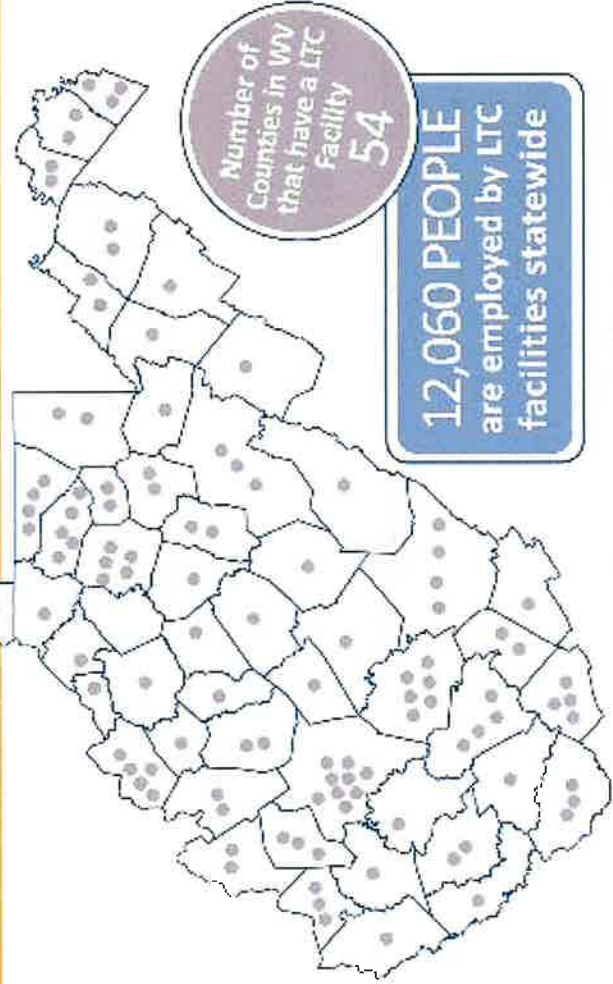
December 11, 2023



# Summary - Location & Site

NAME	CARE SERVICE	NUMBER OF LICENSED BEDS	AVG. DAILY CENSUS	COUNTY	SPECIAL ACCREDITATIONS	MEDICARE CERTIFICATION	MEDICAID CERTIFICATION
HOPEMONT	Long-term Facility	98	46	Preston	None	NO	YES
MANCHIN	Long-term Facility	41	31	Marion	None	NO	YES
LAKIN	Long-term Facility	114	59	Mason	None	NO	YES
JACKIE WITHROW	Long-term Facility	199	50	Raleigh	None	NO	YES
WELCH - GOLDEN HARVEST	Long-term Facility	59	0	McDowell	None	NO	YES
WELCH COMMUNITY HOSPITAL	Acute Care Hospital	55	5	McDowell	None	YES	YES
BATEMAN	Psychiatric Hospital	110	94	Cabell	Joint Commission	YES	YES
SHARPE	Psychiatric Hospital	200	172	Lewis	Joint Commission	YES	YES

# LONG-TERM CARE by the Numbers



## 123 Total Number of Facilities

### % of Patients with Dementia Compared to National

WV 54.90%    NATIONAL 48.90%

### Payer Breakdown compared to National Averages

PAYER	WV	NATIONAL
MEDICARE	9.20%	12.60%
MEDICAID	74.40%	61.10%
OTHER	14.40%	24.90%

### Economic Impact Statewide

**\$1.64 BILLION (Annually)**

The specifics and listed service locations were identified using information available on [www.wvha.org](http://www.wvha.org) and [www.wvcca.org](http://www.wvcca.org). This data is provided for educational and informational purposes, not intended for professional advice.

# Sustainability & Strategic Options

## Benchmark Study Conducted by Baker Tilly US

Study focused on three areas: *Facilities, Operations, and Cost*. The benchmark comparison for LTC is established from data contained in the most current Medicaid cost reports (as of December 31, 2022) of 114 privately owned long-term care facilities. The benchmark comparison for psychiatric hospitals is established from data of 22 state-owned psychiatric hospitals in the surrounding States of Kentucky, Ohio, Pennsylvania, Virginia, and Tennessee.

## LTC Facilities and Psychiatric Hospitals Clinical Contract Staffing

- Initiatives
  - Vendor Negotiations
  - Position Reductions
  - Savings

# Sustainability & Strategic Options

## Role of the Financial Advisor in the Turnaround and Sustainability Initiative

**The financial advisor will assist with strategic planning in the following ways** (this list is not exhaustive):

- Assessment on process improvement, patient acuity, technology and revenue cycle with the focus to improve performance and enhance facility value and outcomes;
- Assessment of short-term cash flow and financial projections;
- Assessment of each physical plant, including renovation options with cost assumptions as well as replacement costs;
- Assessment and development of both short- and long-term opportunities; and
- Strategic alternative and transactional support.

# Contact

**Michael J. Caruso**  
Incoming Cabinet Secretary  
West Virginia Department of Health Facilities  
(304) 558-0684  
[Michael.J.Caruso@wv.gov](mailto:Michael.J.Caruso@wv.gov)

CPS, Crisis Team Workers, Regional Homefinding and Adoption Staff and Commissioner's Office Travel Reimbursement Requests Status Update

Created in	Created in	Created in	Total	
December	November	October		Travel currently pending at State Auditor's Office*
			295	2
			196	43
				153
				Travel currently pending at DHR in workflow for approval
			12	2
				5
				Travel currently in draft not yet submitted to AP for review and approval

Data as of 12/5/2023

\*The SAO is currently working on documents submitted up through the current day. We will continue to run a report every couple of days so we can monitor volume.

One exception is Wayne County. The Financial clerk retired and we are currently providing central resources to facilitate submission of all travel from this county for approval.

# Recovery Residence Taskforce

## Preliminary Findings

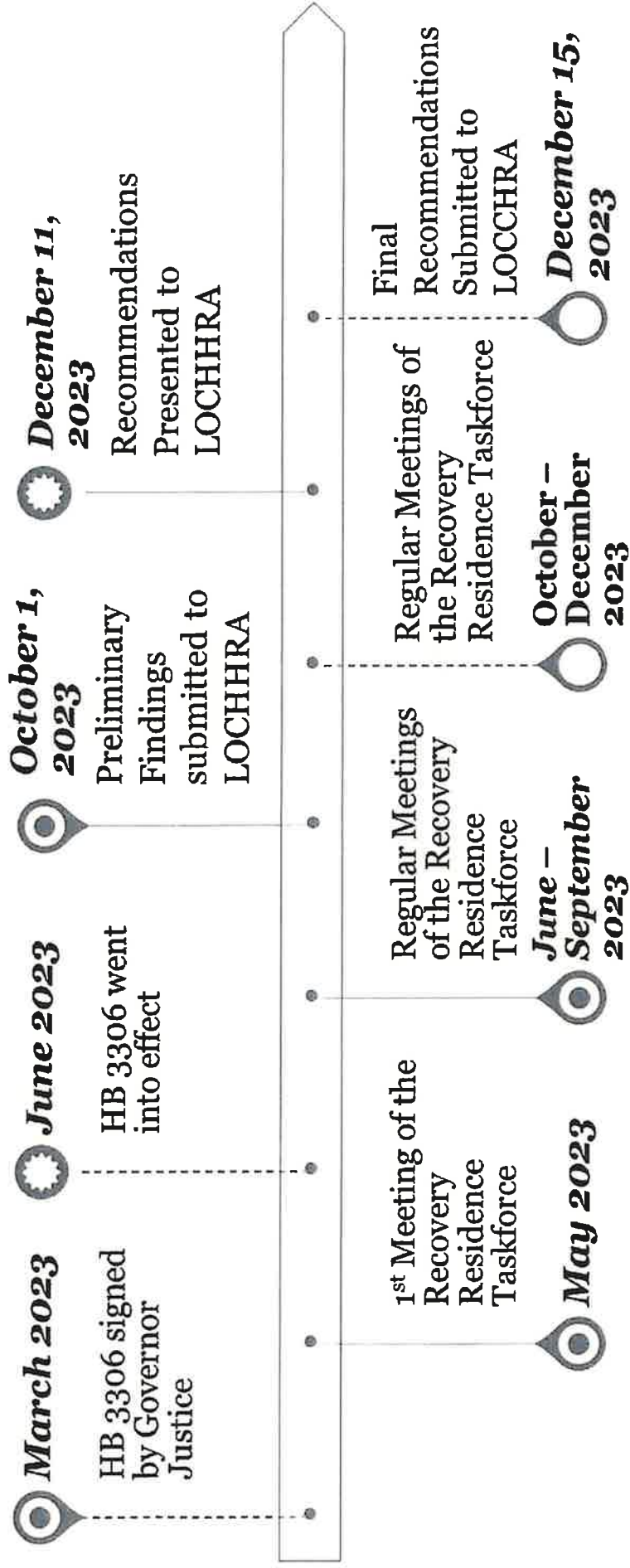
Nicholas Stuchell, General Counsel  
West Virginia Department of Health and Human Resources  
Office of Drug Control Policy



**WEST VIRGINIA OFFICE OF  
DRUG CONTROL POLICY**  
WV Department of Health & Human Resources



# Timeline



# Findings



## Human Trafficking

- Reports of uncertified, mostly faith-based residences that require residents to produce and sell items (e.g., t-shirts, bracelets, mugs, etc.) in the community.
- Reports of uncertified residences that force residents to travel to other states and ask for monetary donations.
- Reports of uncertified residences that own thrift shops and ask residents to work in the shop for no pay.
- Some residences engaging in these practices accept residents that do not have a substance use disorder (SUD).

# Findings



## Supplemental Nutrition Assistance Program (SNAP) Fraud

- Recovery residence operators have been reported as using resident SNAP benefits inappropriately.
  - Using benefits for personal food items
  - Not following proper protocols for acquiring food
- Reports of operators refusing to return SNAP benefits at time of discharge.
- West Virginia Alliance of Recovery Residences requires a procedure for operators to use SNAP benefits appropriately.

## Recommendations



Amend state law to designate a state agency to investigate and prosecute recovery residence crimes.

- The entity should have a similar composition as the US Attorney’s Health Care Fraud Task Force, responsible for investigating and prosecuting violations of West Virginia law.
- The recommended entity should consist of prosecutors and law enforcement entities.
- The designated state entity should communicate with local law enforcement and the US Attorney’s Office to ensure that investigations are handled by the proper entity and limit duplication of efforts.
- This recommendation is not intended to remove authority from any current government agency, office, or department.

## Recommendations



Mandate the use of an outcome tracking system for all certified recovery residences.

- Advanced Recovery Management System (ARMS) is a platform that promotes recovery support services that facilitate resident transition from active addiction to healthy, pro-social networks and tracks recovery capital gains
- A system such as this could provide a standardized mechanism for assessing a resident's progress while being housed
- ARMS may also be an effective tool for tracking referrals to further reinforce resident assessments

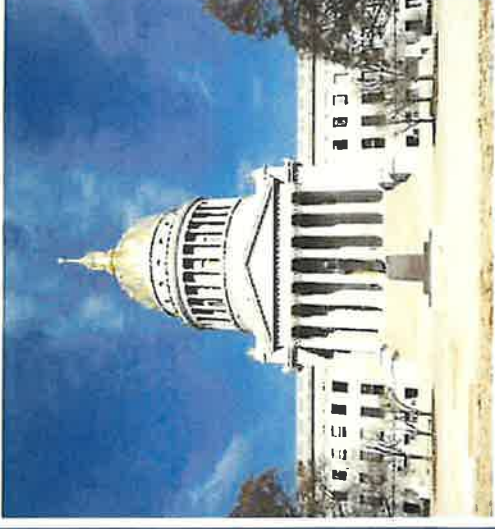


WEST VIRGINIA INSTITUTE OF  
PUBLIC POLICY

# Next Steps

# Intellectual/Developmental Disabilities (IDD) Service Cost & Rate Review

Cynthia Beane, MSW, LCSW  
Commissioner  
December 12, 2023



# Myers and Stauffer Project Overview

- Engaged stakeholders to identify concerns with service delivery and/or reimbursement rates.
- Created a project-specific webpage.
- Developed a cost report to capture provider wage and service provision costs.
- Analyzed data from provider cost reports.
- Designed service specific rate models and developed associated rates.



# Rate Methodology Example

Rate Model Example	
<b>Total Employee Cost</b>	
Wage Component	(A)
Employee Related Expenses Component	(B)
Productivity Multiplier	(C)
<b>Total Operations Cost</b>	
Program Component	(D)
General/Admin Component	(E)

*$(A + B) \times C + D + E = \text{Hourly Payment Rate}$*   
*Hourly Payment Rate / 4 = 15-minute Billing Unit*



# Service Rate – IDDW



Service	Ratio	Service Code	Service Unit	Rate	Proposed Rate
Home-Based Person Centered Supports	1:01	S5125 U7	15 min	\$5.45	\$6.36
	1:02	S5125 U8	15 min	\$2.73	\$3.18
	1:01	S5125 U5	15 min	\$2.74	\$4.73
	1:02	S5125 U6	15 min	\$1.37	\$2.37
PCS - Personal Options (IDDW)	Direct Care	S5125 UA,	15 min	\$2.74	\$4.25
		S5125 UA UK			

# ABHWV Mountain Health Promise

*Todd White – CEO*

*Kathy Szafran – Executive Director*

*Diana Richards – Director of Care  
Management*



# Aetna Better Health of West Virginia 3 Tier Care Management System

MHP Case Management Tier of Care	2022	Jan 2023	Feb 2023	March 2023	April 2023	May 2023	June 2023	July 2023	Aug 2023	Sept 2023	Oct 2023
Members enrolled in Intensive CM	926	1,113	1,088	805	1,122	1,117	1,149	1,094	1,048	1,123	1,095
Members enrolled in Supportive CM	961	753	704	1,017	696	754	773	896	896	881	824
Members enrolled in Population Health	28,227	27,798	27,416	25,929	22,462	20,831	22,331	20,764	20,229	20,844	20,037
<b>TOTAL</b>	<b>27,981</b>	<b>29,664</b>	<b>29,208</b>	<b>27,751</b>	<b>24,280</b>	<b>22,702</b>	<b>24,253</b>	<b>22,703</b>	<b>22,173</b>	<b>22,848</b>	<b>21,956</b>

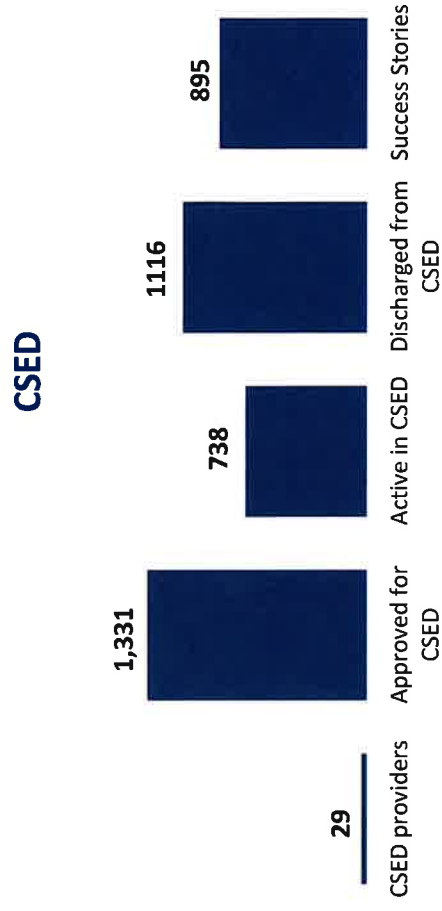


All MHP members must be enrolled into some tier of Case Management (PHE impacts enrollment level)



Aetna Care Managers are physically onsite at the county BSS offices to assist and support the BSS state workers. Our Care Connection model enables our CM staff to be local in the communities where our members live.

# Aetna Better Health of West Virginia Children with Serious Emotional Disorder Waiver (CSED)



**POSITIVES:**

- ♥ Roster has tripled each year since inception
- ♥ Addition of a CSEDW Trainer
- ♥ Per Member Per Week Reimbursement for WF CSEDW Services in Schools
- ♥ Success stories transition into our local communities

**BARRIERS:**

- ♥ Provider Capacity



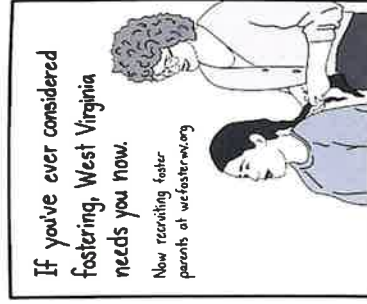
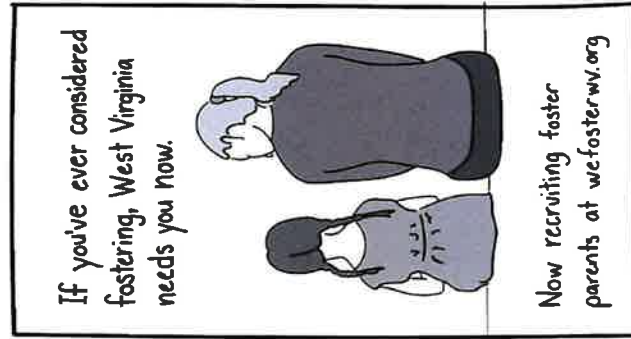
# Aetna Better Health of West Virginia

## Key Partner Focus Groups

Group Name	# of Meetings Held	Group Composition
Member Advisory Council	14	Foster parents, kinship caregivers, adoption and biological parents
Socially Necessary Services (SNS) Focus Group	30	Foster parents, kinship caregivers, adoption and biological parents of system-involved youth receiving SNS services
Residential Treatment Facility (RTF) Focus Group	32	Youth living in RTFs and their families
Grand families Group (formerly known as Parents Advocating for Care of Kids (PACK))	16	Grandparents and great-grandparents caring for their grandchildren
Governance Council	11	Aetna Executives, DHHR, Providers, Legislatives, Juvenile Justice Leaders, Community Representatives, Youth Partners, Parent Partners

# Aetna Better Health of West Virginia WV Statewide Foster Care Recruitment Campaign – 84 Agency

MOCKUPS



## Ever Considered Fostering

### Core values:

- Duty
- Community
- Responsibility
- State Pride

### Effective strategy:

- Urgency
- Speaks directly to people who have been considering for some time
- Positions the decision to foster as an extension of state pride
- Leverages West Virginia-specific, recognizable lifestyle photography





West Virginia  
Department of Health and Human Resources  
Children's Health Insurance Program

*DECEMBER 2023*  
*Report*

to

Joint Committee on  
Government and Finance

# WVCHIP Enrollment Report

OCTOBER 2023

County	County Pop.	MATERINITY			Total CHIP	Total Medicaid	Total	CHIP/Medicaid	2020	2020		
	2020 Est. (0-18 Yrs)	BLUE Oct-23	GOLD Oct-23	PREM Oct-23	BLUE Oct-23	PREM Oct-23	Enrollment Oct-23	Enrollment Oct-23	CHIP/Medicaid Enrollment	% of Population	SAHIE Uninsured Est.	SAHIE % Uninsured
Barbour	3,243	111	32	87	1	2	233	1,763	1,996	61.5%	118	3.6%
Berkeley	28,759	1,134	397	709	18	20	2,278	12,959	15,237	53.0%	874	3.0%
Boone	4,366	130	46	64	2	1	243	2,701	2,944	67.4%	142	3.3%
Braxton	2,579	69	25	37	0	2	133	1,381	1,514	58.7%	101	3.9%
Brooke	3,888	0	0	0			0	1	1	0.0%	119	3.1%
Cabell	18,302	463	164	300	9	8	944	8,973	9,917	54.2%	426	2.3%
Calhoun	1,265	55	15	22	1	2	95	774	869	68.7%	49	3.9%
Clay	1,818	47	19	32	2	1	101	1,194	1,295	71.2%	65	3.6%
Doddridge	1,181	46	9	17	0	2	74	690	764	64.7%	52	4.4%
Fayette	8,609	355	89	166	2	8	620	4,830	5,450	63.3%	265	3.1%
Gilmer	1,142	24	16	30	1	0	71	572	643	56.3%	39	3.4%
Grant	2,261	77	28	60	5	0	170	1,206	1,376	60.9%	94	4.2%
Greenbrier	6,618	267	107	207	6	4	591	3,671	4,262	64.4%	247	3.7%
Hampshire	4,103	166	52	74	2	0	294	2,316	2,610	63.6%	173	4.2%
Hancock	5,501	292	100	142	4	2	540	4,035	4,575	83.2%	181	3.3%
Hardy	2,742	107	37	71	2	0	217	1,421	1,638	59.7%	131	4.8%
Harrison	14,649	452	170	293	6	8	929	6,279	7,208	49.2%	491	3.4%
Jackson	6,156	153	56	97	0	2	308	2,871	3,179	51.6%	188	3.1%
Jefferson	13,252	401	131	225	6	0	763	3,768	4,531	34.2%	457	3.4%
Kanawha	35,737	1,046	350	641	17	24	2,078	32,932	35,010	98.0%	998	2.8%
Lewis	3,385	127	45	84	2	5	263	2,032	2,295	67.8%	126	3.7%
Lincoln	4,432	121	23	84	3	2	233	2,773	3,006	67.8%	153	3.5%
Logan	6,538	192	67	112	3	2	376	4,238	4,614	70.6%	198	3.0%
Marion	11,397	375	106	232	4	6	723	5,147	5,870	51.5%	390	3.4%
Marshall	5,847	145	52	77	3	4	281	2,641	2,922	50.0%	177	3.0%
Mason	5,492	153	50	72	0	5	280	2,952	3,232	58.8%	150	2.7%
Mercer	12,047	470	147	232	6	7	862	7,958	8,820	73.2%	332	2.8%
Mineral	5,365	221	59	93	2	0	375	2,459	2,834	52.8%	170	3.2%
Mingo	5,013	132	54	70	1	1	258	3,713	3,971	79.2%	158	3.2%
Monongalia	18,331	471	146	296	5	9	927	5,730	6,657	36.3%	644	3.5%
Monroe	2,635	88	32	96	2	2	220	1,196	1,416	53.7%	106	4.0%
Morgan	3,167	133	49	91	3	0	276	1,449	1,725	54.5%	148	4.7%
McDowell	3,372	67	39	65	0	1	172	2,684	2,856	84.7%	93	2.8%
Nicholas	4,952	206	50	110	3	6	375	2,648	3,023	61.0%	151	3.0%
Ohio	8,140	221	80	134	2	1	438	3,734	4,172	51.3%	218	2.7%
Pendleton	1,250	42	20	40	2	0	104	535	639	51.1%	63	5.0%
Pleasants	1,461	48	4	27	0	2	81	650	731	50.0%	43	2.9%
Pocahontas	1,406	41	20	33	0	1	95	742	837	59.5%	65	4.6%
Preston	6,396	254	68	149	2	4	477	2,970	3,447	53.9%	229	3.6%
Putnam	13,000	410	135	221	1	6	773	4,279	5,052	38.9%	356	2.7%
Raleigh	15,247	511	131	372	10	9	1,033	9,122	10,155	66.6%	394	2.6%
Randolph	5,224	212	61	135	3	3	414	2,651	3,065	58.7%	187	3.6%
Ritchie	1,896	61	14	31	1	0	165	1,006	1,171	61.8%	90	4.7%
Roane	2,757	151	56	89	0	2	258	1,426	1,684	61.1%	93	3.4%
Summers	1,981	93	15	49	0	2	174	1,424	1,598	80.7%	64	3.2%
Taylor	3,413	113	37	64	1	1	196	1,423	1,619	47.4%	128	3.8%
Tucker	946	44	25	44	0	2	92	500	592	62.6%	49	5.2%
Tyler	1,718	46	20	21	0	3	195	787	982	57.2%	62	3.6%
Upshur	4,938	155	72	126	1	2	357	2,688	3,045	61.7%	169	3.4%
Wayne	7,913	255	94	127	4	2	388	4,505	4,893	61.8%	264	3.3%
Webster	1,559	84	22	33	1	1	147	1,052	1,199	76.9%	52	3.3%
Wetzel	3,053	75	14	39	2	1	115	1,921	2,036	66.7%	104	3.4%
Wirt	1,209	34	7	23	1	0	318	632	950	78.6%	52	4.3%
Wood	17,613	506	138	276	5	6	773	8,642	9,415	53.5%	552	3.1%
Wyoming	4,086	133	48	118	3	4	306	2,394	2,700	66.1%	141	3.5%
<b>Totals</b>	<b>363,350</b>	<b>11,785</b>	<b>3,843</b>	<b>7,139</b>	<b>160</b>	<b>188</b>	<b>23,115</b>	<b>195,040</b>	<b>218,155</b>	<b>60.0%</b>	<b>11,581</b>	<b>3.2%</b>



Department of Health and Human Resources

Bureau for Medical Services

Medicaid Report  
OCTOBER 2023

Submitted to

Joint Committee on Government and Finance  
and  
Legislative Oversight Commission on Health and Human  
Resources Accountability

DECEMBER 2023

WV DEPARTMENT OF HEALTH AND HUMAN RESOURCES  
 BUREAU FOR MEDICAL SERVICES  
 EXPENDITURES BY PROVIDER TYPE  
 SFY2024

MONTH OF OCTOBER 2023

	ACTUALS SFY2023	TOTAL SFY2024	ACTUALS Current Month Ended 10/31/23	ESTIMATE Current Month Ended 10/31/23	ACTUALS Year To-Date Thru 10/31/23	PROJECTED 11/01/23 Thru 6/30/2024
Medicaid Health Insurance Payments: Managed Care Organizations (MCO)	2,699,447,506	2,316,592,754	173,654,991	208,493,348	796,111,401	1,520,481,353
Medicaid MCO - Evaluation and Management	-	-	-	-	-	-
Medicaid MCO - Vaccine Codes	-	-	-	-	-	-
Medicaid Health Insurance Payments: Prepaid Ambulatory Health Plan	-	-	-	-	-	-
Medicaid Health Insurance Payments: Prepaid Inpatient Health Plan	-	-	-	-	-	-
Medicaid Health Insurance Payments: Group Health Plan Payments	2,311,560	2,219,207	208,400	199,729	1,022,199	1,197,008
Medicaid Health Insurance Payments: Coinsurance	-	-	-	-	-	-
Medicaid Health Insurance Payments: Other	-	-	-	-	-	-
Home & Community-Based Services (IDD)	399,436,614	425,644,479	32,264,708	38,308,003	115,171,844	310,472,635
Home & Community-Based Services (Aged/Disabled)	114,651,033	162,465,610	5,357,672	14,621,905	18,201,290	144,264,321
Home & Community-Based Services (Traumatic Brain Injury)	3,938,462	2,368,144	170,697	213,133	452,187	1,915,957
Home & Community-Based Services (State Plan 1915(f) Only)	-	-	-	-	-	-
Home & Community-Based Services (State Plan 1915(j) Only)	-	-	-	-	-	-
Community Supported Living Services	-	-	-	-	-	-
Programs Of All-Inclusive Care Elderly	-	-	-	-	-	-
Personal Care Services - Regular Payments	58,767,481	86,842,302	1,546,749	7,815,807	5,500,472	81,341,830
Personal Care Services - SDS 1915(j)	-	-	-	-	-	-
Targeted Case Management Services - Case Management	1,953,673	2,125,804	61,571	191,322	282,566	1,843,238
Targeted Case Management Services - State Wide	-	-	-	-	-	-
Primary Care Case Management Services	-	-	-	-	-	-
Hospice Benefits	30,179,762	27,812,852	3,284,921	2,503,157	12,424,654	15,388,198
Emergency Services Undocumented Aliens	1,591,557	599,899	46,959	53,991	236,356	363,543
Federally Qualified Health Center	11,339,883	6,515,541	1,070,531	586,399	3,577,190	2,938,351
Non-Emergency Medical Transportation	41,612,362	42,182,568	3,343,906	3,796,431	13,796,467	28,386,101
Physical Therapy	1,001,192	985,693	91,594	88,712	362,817	622,876
Occupational Therapy	417,926	408,056	37,664	36,725	142,359	265,697
Services for Speech, Hearing & Language	286,823	236,711	28,513	21,304	102,655	134,056
Prosthetic Devices, Dentures, Eyeglasses	799,272	584,182	62,394	50,776	322,429	241,753
Diagnostic Screening & Preventive Services	74,116	63,414	12,913	5,707	37,797	25,617
Nurse Mid-Wife	96,015	101,173	12,708	9,106	47,218	53,955
Emergency Hospital Services	-	-	-	-	-	-
Critical Access Hospitals	23,286,462	21,486,408	2,129,954	1,934,677	8,416,618	13,079,790
Nurse Practitioner Services	4,696,653	3,859,208	547,353	347,329	1,953,337	1,905,871
School Based Services	32,482,763	29,998,882	83,731	2,699,899	1,228,340	28,770,542
Rehabilitative Services (Non-School Based)	36,592,651	26,807,946	2,756,252	2,233,995	11,474,063	15,333,882
2a) Opioid Treatment Program (OTP) - Methadone services	146,007	-	(124,307)	-	(82,735)	82,735
2a) Opioid Treatment Program (OTP) - Peer Recovery Support Services	2,322,357	-	461	-	4,567	(4,567)
2a) Opioid Treatment Program (OTP) - Residential Adult Services	7,008,425	-	1,087,050	-	3,883,625	(3,883,625)
2a) OUD Medicaid Assisted Treatment Services	16,386,491	-	1,892,835	-	6,595,764	(6,595,764)
2a) Opioid Treatment Program (OTP) - Other	629,873	-	67,761	-	247,679	(247,679)
Private Duty Nursing	4,636,150	4,807,324	492,770	432,659	1,910,278	2,897,046
Freestanding Birth Centers	-	-	-	-	-	-
Health Home for Enrollees w Chronic Conditions	2,657,501	2,507,273	239,624	225,655	789,545	1,717,729
Other Care Services	26,284,761	36,847,337	3,386,138	3,316,260	11,991,704	24,855,633
Less: Recoupments	-	-	(11,013,192)	-	(11,013,192)	11,013,192
<b>NET MEDICAID EXPENDITURES:</b>	<b>5,416,202,136</b>	<b>5,182,857,492</b>	<b>358,066,301</b>	<b>466,278,455</b>	<b>1,728,799,947</b>	<b>3,454,057,545</b>

WV DEPARTMENT OF HEALTH AND HUMAN RESOURCES  
 BUREAU FOR MEDICAL SERVICES  
 MEDICAID CASH REPORT  
 SFY2024

	MONTH OF OCTOBER 2023				PROJECTED	TOTAL
	ACTUALS	ACTUALS	ACTUALS	ACTUALS	11/01/23 Thru 06/30/24	SFY2024
	SFY2023	Current Month Ended 10/31/23	Year-To-Date Thru 10/31/23	Year-To-Date Thru 10/31/23		
<b>REVENUE SOURCES</b>	81,507,579	39,303,230	127,247,384	127,247,384	-	127,247,384
Beg. Bal. (5084/1020 prior mth)						
<b>MATCHING FUNDS</b>						
General Revenue (0403/189)	292,112,801	19,786,175	55,860,445	55,860,445	211,342,329	267,202,774
IDC Waiver (0403/466)	108,541,736	7,959,728	29,668,075	29,668,075	78,873,661	108,541,736
Rural Hospitals Under 150 Beds (0403/940)	2,596,000	216,333	865,333	865,333	1,730,667	2,596,000
Tertiary Funding (0403/547)	6,356,000	529,667	2,118,667	2,118,667	4,237,333	6,356,000
Traumatic Brain Injury (0403/835)	800,000	58,667	218,667	218,667	581,333	800,000
Title XIX Waiver for Seniors (0403-533)	13,593,620	996,865	3,715,589	3,715,589	9,878,031	13,593,620
Medical Services Surplus (0403/633)	8,800,000	-	-	-	-	-
Waiver for Senior Citizens Surplus (0403/526)	-	-	-	-	-	-
Lottery Waiver (Less 550,000) (5405/539)	13,603,501	-	5,781,658	5,781,658	17,344,975	23,126,633
Lottery Waiver (0420/539)	19,612,957	-	2,709,956	2,709,956	8,129,869	10,839,825
Lottery Transfer (5405/871)	16,400,070	-	4,100,018	4,100,018	12,300,052	16,400,070
Excess Lottery (5365/189)	26,697,960	-	-	-	60,716,750	60,716,750
Lottery Surplus (5405/68199)	14,750,000	-	17,000,000	17,000,000	14,750,000	14,750,000
Lottery Surplus (5365/68100)	16,200,000	-	-	-	-	17,000,000
Trust Fund Appropriation (5185/189)	14,208,033	-	-	-	71,085,999	71,085,999
Provider Tax (5090/189)	290,400,000	41,040,000	154,322,589	154,322,589	484,929,073	639,251,662
NSGO JPL (5084/6717)	-	-	-	-	-	-
Expirations (5084)	-	-	-	-	-	-
Certified Match	15,218,760	583,266	2,654,326	2,654,326	11,051,674	13,706,000
Reimbursables - Amount Reimbursed	7,427,510	267,045	1,965,487	1,965,487	(1,965,487)	-
Other Revenue (MWIN, Escheated Warrants, etc.) 5084/4010 & 4015	10,461	23,263	79,753	79,753	(79,753)	-
CHIP State Share	-	-	-	-	-	-
CMS - 64 Adjustments	196,666	-	1,136,257	1,136,257	(1,136,257)	-
<b>TOTAL MATCHING FUNDS</b>	\$ 949,033,654	\$ 110,764,240	\$ 409,444,203	\$ 409,444,203	\$ 983,770,250	\$ 1,393,214,454
<b>FEDERAL FUNDS</b>	4,596,740,061	291,216,725	1,365,251,703	1,365,251,703	2,737,768,621	4,103,020,324
<b>TOTAL REVENUE SOURCES</b>	\$ 5,545,773,715	\$ 401,980,965	\$ 1,774,695,906	\$ 1,774,695,906	\$ 3,721,538,871	\$ 5,496,234,777
<b>TOTAL EXPENDITURES:</b>						
Provider Payments	\$ 5,418,851,102	\$ 363,028,460	\$ 1,735,790,051	\$ 1,735,790,051	\$ 3,501,059,428	\$ 5,236,849,480
<b>TOTAL</b>	\$ 126,922,614	\$ 38,952,504	\$ 38,905,855	\$ 38,905,855	\$ 220,479,443	\$ 259,385,298

Note: FMAP (75.60% applicable Oct 2023 - Dec 2023)



Department of Health and Human Resources

Bureau for Medical Services

Medicaid Waiver Report  
OCTOBER 2023

Submitted to

Joint Committee on Government and Finance  
and

Legislative Oversight Commission on Health and Human  
Resources Accountability

DECEMBER 2023

**WV Department of Health and Human Resources  
Bureau for Medical Services /DD Waiver Program Report**

Indirect/Developmental Disabilities Waiver Reported October 31, 2023	FY2023												YTD2024	
	July-23	Aug-23	Sep-23	Oct-23	Nov-23	Dec-23	Jan-24	Feb-24	Mar-24	Apr-24	May-24	Jun-24		
Slots approved by CMS	6,115	6,115	6,115	6,115	6,115									6,115
Total number of members served YTD (Unduplicated slots used) (1)	6,075	6,015	6,017	6,023	6,032									6,032
Total number of members served YTD in Traditional Slots	6,073	6,013	6,015	6,021	6,029									6,029
Total number of members served YTD in Adult Ben H. slots (Active)	2	0	1	1	2									2
Total number of members served YTD in Children Ben H. slots (Active)	2	1	1	1	1									1
Applicants determined eligible (2)	503	31	28	43	37									139
Applicants determined ineligible (3)	546	40	58	49	61									208
<b>ACTIVE MEMBERS</b>														
# of active members at the end of the month (unduplicated slots active) (1)	5,905	6,004	5,994	5,987	5,993									5,993
Discharged members at the end of the calendar month	183	19	14	14	3									50
Deceased	67	7	5	5	2									19
Left program to enter a facility	56	4	2	4	0									10
a. Hospital	0	0	0	0	0									0
b. ICF/IID	30	1	0	3	0									4
c. Nursing Facility	25	3	2	1	0									6
d. Psychiatric Facility	0	0	0	0	0									0
e. Rehabilitation Facility	0	0	0	0	0									0
f. Other Facility	1	0	0	0	0									0
Other (6)	60	8	7	5	1									21
<b>MANAGED ENROLLMENT LIST (MEL)</b>														
Total number of applicants on the MEL at the end of the month	548	459	483	516	540									540
Number of applicants added to the MEL (4)	503	31	28	43	37									139
Applicants enrolled (removed from the MEL)	208	118	4	7	9									138
Applicants removed from the MEL due to Death (5)	2	1	0	1	1									3
Applicants removed from the MEL due to Other (6)	17	1	0	2	3									6
Applicants on the MEL who are in a Nursing Facility	1	3	3	5	4									4
Applicants on the MEL who are in an ICF/IID Group Home	20	20	24	22	20									20
Applicants on the MEL receiving Personal Care Services each month	10	10	13	13	8									8
Longest on the MEL to date (7)	1173	1,204	1,235	1,265	1,296									1,296

(1) Unduplicated slots used refers to the total number of members who accessed services during the fiscal year.

(2) and (3) Numbers determined medically eligible and ineligible reflect the activity for the month reported. Financial eligibility is not determined until after slot release.

(4) Monthly managed enrollment is being reported in the month an applicant is determined medically eligible; however, the individual's placement date on the managed enrollment list will be based on the date the Medical Eligibility Contract Agent (MECA) determines medical eligibility.

(5) Currently there is no way to track other reasons why someone may leave the MEL for reasons such as moved out of state, decided not to participate in program, etc.

(6) Other reason for program discharge may include, but is not limited to, member is no longer financial or medically eligible, moved out of state, no longer wants the service, etc.

(7) Longest number of days an applicant has been on the MEL.